



STAINLESS STEEL BRAIDED WIRE WITH SWAGE SLEEVE ATTACHED

Technical Data

Description

Type 316 Stainless Steel Braided Wire with swage sleeve attached. Attachment fixtures for valve & instrument tags are type 316 stainless steel wire, providing maximum resistance to corrosion and greatest strength to ensure permanent attachment of tags.

Type 316 stainless steel wire is braided 7 x 7: seven strands braided together, then seven braided strands braided together. Total outside diameter of the wire is 0.063" (1.6 mm).

Swage sleeves are also type 316 stainless steel. A professional quality tool is required to sufficiently crimp the sleeves to ensure proper bond with the braided wire.

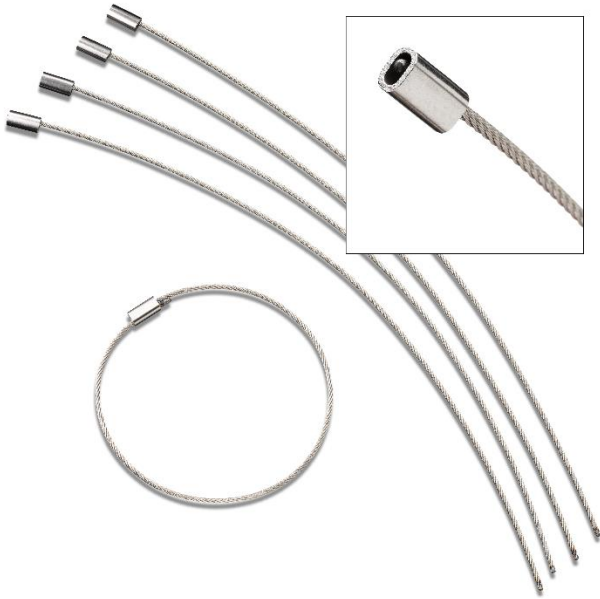
Type 316 stainless steel wire & swage sleeves are recommended for use in process chemical, pharmaceutical, petrochemical and offshore facilities (both indoors and outdoors) when there is potential exposure to harsh chemicals or salt water environments.

Stainless Steel Type 316 Braided Wire/Crimp Combination:

Part #15750

10" Length (254 mm)

Pre-Attached Swage Sleeve



Information on physical and chemical characteristics is based on tests we believe to be reliable. The values are intended only as a source of information and are given without guarantee and do not constitute a warranty. Purchasers should independently determine, prior to use, the suitability of this material for their specific application.

Updated on 3/2/2020

