

# The First Thing We Deliver is Confidence

Proper labeling has an impact on the reliable and safe operation of solar energy plants. When you invest in the world-class quality and expertise of Marking Services, Inc. (MSI) solar labeling, you gain significant returns on protecting the productivity of your plant for years to come.

MSI is dedicated to providing an unmatched level of service and highly engineered products that advance the industry's standards. Our customers depend on our experienced team of specialists to accurately identify, engineer and manufacture a complete collection of exceedingly legible and extremely durable labels and signs for the most complex solar energy systems. So you can focus on what's important - running your operation.



# Your Single Source for Photovoltaic Solar Labeling

CONSULTATION → BOM →  
MANUFACTURING → INFORMATION

MSI has invested in state-of-the-art facilities to provide labeling services wherever our customers do business. Our service and sales staff supports solar labeling and asset identification needs with a commitment to create safer, more efficient plants. We'll help you choose the right materials and services for all your solar identification needs.

Contact us today for answers to your material questions —  
800.234.0135 or 414.973.1331



Marking Services Incorporated

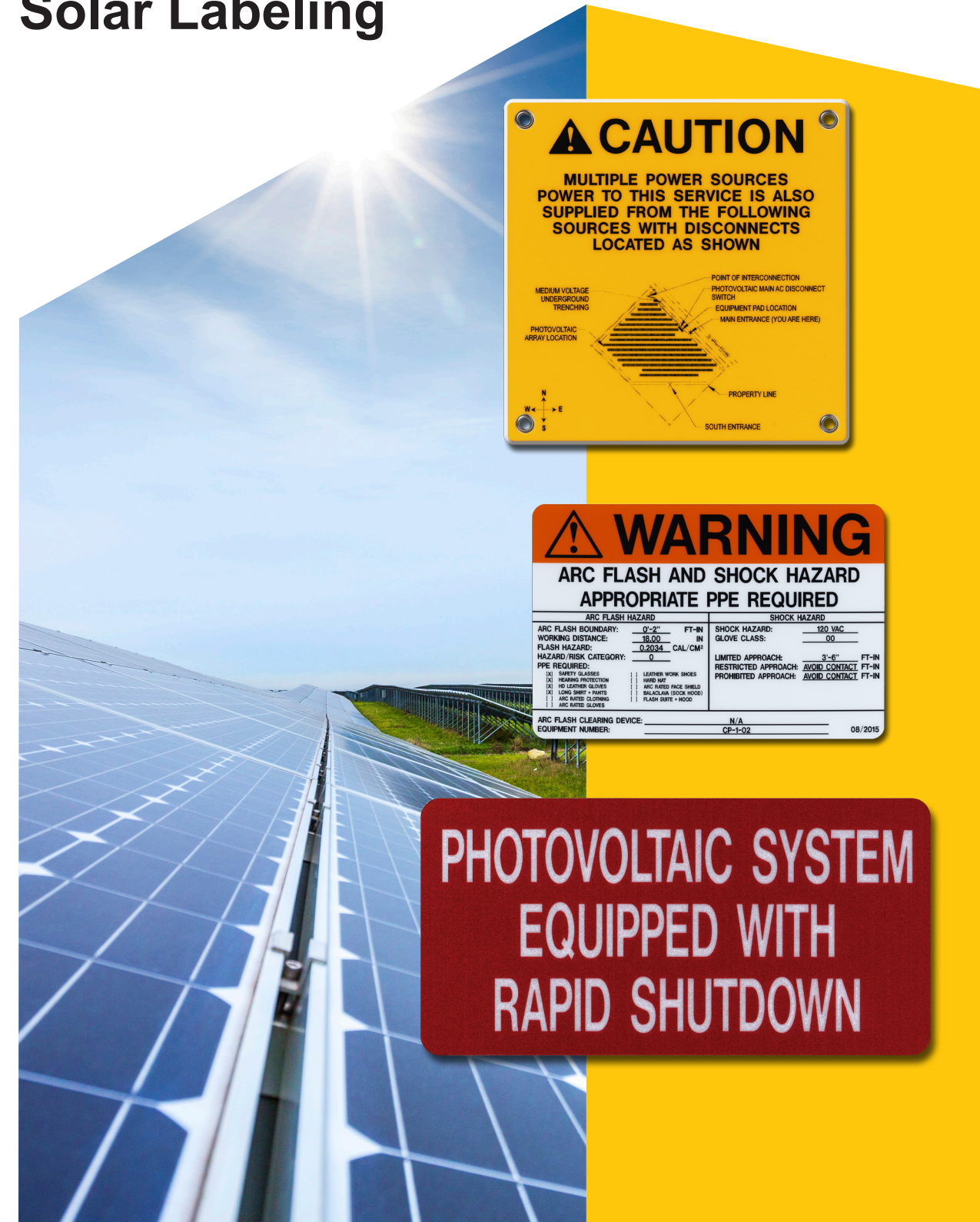
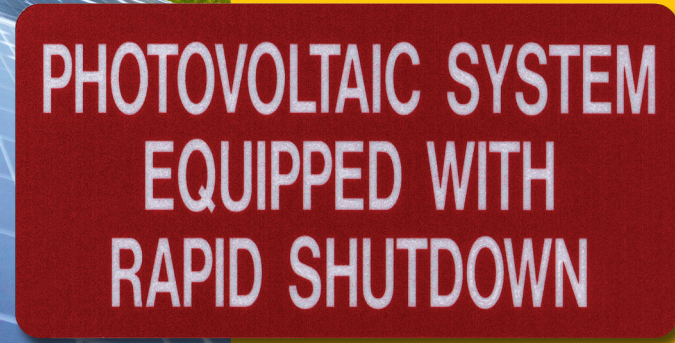
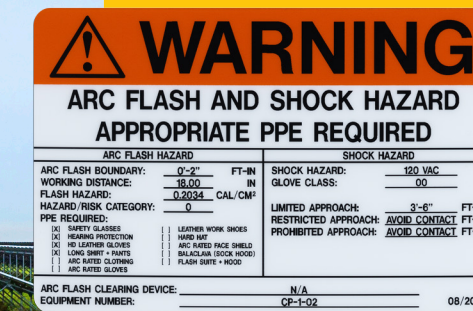
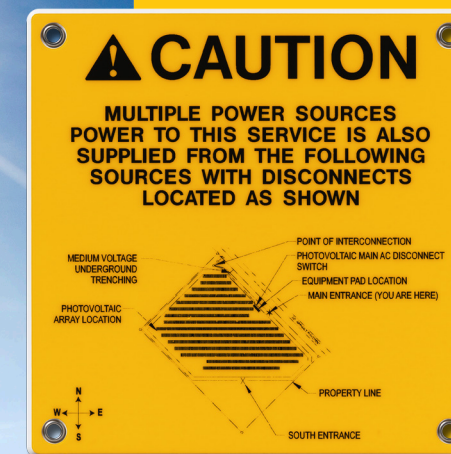
COMPANY WITH  
QUALITY SYSTEM  
CERTIFIED BY DNV GL  
= ISO 9001 =

Toll free: 800.234.0135 • Ph: 414.973.1331 • sales@markserv.com  
8265 N. Faulkner Road • P.O. BOX 240027 • Milwaukee, WI 53224



Marking Services Incorporated

# We're on the Grid with Solar Labeling



# Today's Most Advanced Products Engineered for Visibility & Durability

## MS-215 Max-Tek™ Outdoor Durable Solar Labels

Marking Services (MSI) offers MS-215 Max-Tek™ solar labels, the highest quality solar labels available for identifying photovoltaic (PV) solar equipment and components. Solar identification exposed to sun, wind and dust will fail if materials are not suitable for the environment where they are installed.

Our MS-215 Max-Tek™ labels offer the ultimate visibility and outdoor durability. MS-215 labels shield printed legends between two layers of high-performance, UV resistant plastic. The sealed tag provides protection against moisture, sunlight and the effects of harsh environments. With complete printing flexibility, size, color, reflectivity and design is unlimited. Your company logo, QR and linear barcodes and safety alerting symbols enhance your project deliverables.

## Code Compliant Solar Labels

MSI manufactures solar labels to meet the following codes and regulations:

- NEC 2014
  - Article 110 "Requirements for Electrical Installations"
  - Article 690 "Labeling Requirements for Photovoltaic (PV) Solar Systems"
  - Article 705 "Labeling for Interconnected Electric Power Production Sources"
- NFPA 70E "Standard for Electrical Safety in the Workplace"
- OSHA 1910.269 "Electric Power Generation, Transmission, and Distribution"
- ANSI Z535 "Safety Alerting Standards"

PHOTOVOLTAIC INVERTER A	
RATED MAX POWER-POINT CURRENT	2932 ADC
RATED MAX POWER-POINT VOLTAGE	700.0 VDC
MAXIMUM SYSTEM VOLTAGE	987.6 VDC
MAXIMUM CIRCUIT CURRENT	3950 ADC

**MAIN PHOTOVOLTAIC SYSTEM DISCONNECT**

## Engraved Plastic Outdoor Durable Solar Labels

MSI offers outdoor durable engraved solar labels, AKA "placard", designed to withstand the harshest environments. Engraved plastic labels are easy to read providing excellent visibility for important operational information. Text is highly visible providing a distinct contrast between letter color and background color.

**WARNING!**  
ELECTRIC SHOCK HAZARD.  
DO NOT TOUCH TERMINALS.  
TERMINALS ON BOTH THE LINE  
AND LOAD SIDES MAY BE ENERGIZED  
IN THE OPEN POSITION.

PHOTOVOLTAIC  
SYSTEM KWH  
METER

## MS-900 TO Self-Adhesive Labels with MS-1000 UV Top Laminate

MS-900 TO labels with MS-1000 UV top laminate are an effective choice for solar labeling providing protection from UV. Printed on premium quality, fade resistant vinyl with durable industrial grade adhesive, these labels adhere to most surfaces with limited surface preparation. Text and graphics are shielded behind a UV resistant MS-1000 top laminate providing protection from the elements. Reflective MS-900 TO labels with MS-1000 are also available.



## PV Solar Content Expertise

Let our PV solar content experts guide you through the selection of materials required to meet your project specification.

- Fast turnaround times (most orders ship within 24-48 hours)
- Custom labels with no art fees
- Quick-order templates
- Order can be packed by area, array, equipment, row, etc.
- 5-year free replacement warranty on MS-215 Max-Tek™ products
- No distributor mark-ups, work directly with a MSI consultant
- Additional materials available to meet all project requirements



## Demanding Environments Require Serious Products and Service

Marking Services improves and standardizes solar identification to promote safer work environments and minimize downtime due to errors or accidents. We provide a full complement of identification products designed to fulfill all needs for identification in any environment.

Through our commitment to providing value-added services, high-quality products and on-time delivery, MSI offers you a one-stop, comprehensive source for all your identification needs.

**NOTICE**  
Main Lug Panel Board. To De-Energize open Main PV System AC Disconnect A

**PHOTOVOLTAIC  
INVERTER 1  
DC DISCONNECT**

Contact us to learn more about the MSI Advantage.  
800.234.0135 • 414.973.1331 • sales@markserv.com